

LESSON 0

sets up

development environment --

Arduino IDE

But..

e.....

what is arduino IDE.....?

<http://www.elegoo.com>

Arduino IDE

As an open source **software**, Arduino IDE, basing on Processing IDE development is an integrated development environment officially launched by Arduino.

In the next part, each movement of the vehicle is controlled by the program so it's necessary to get the program installed and set up correctly. By using Arduino IDE, **You just write the program code in the IDE and upload it to the Arduino circuit board. The program will tell the Arduino circuit board what to do.**

so, Where can we download arduino IDE?

STEP 1:

Go to

<https://www.arduino.cc/en/Main/Software>

and you will see below page.

The version available at this website is usually the latest version, and the actual version may be newer than the version in the picture.



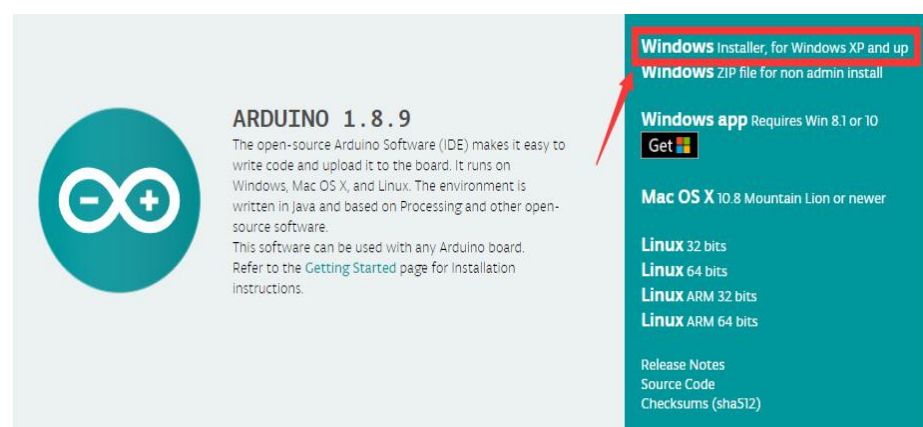
STEP2:

Download the development software that is suited for the operating system of your computer.

Take Windows as an example here.

If you are macOS, please pull to the end.

You can install it using the EXE installation package or the green package.



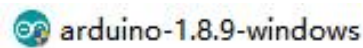
The following is the exe implementation of the installation procedures.

Press the char **"Windows Installer"**

STEP3:

Press the button **"JUST DOWNLOAD"** to download the software.

The download file:



Contribute to the Arduino Software

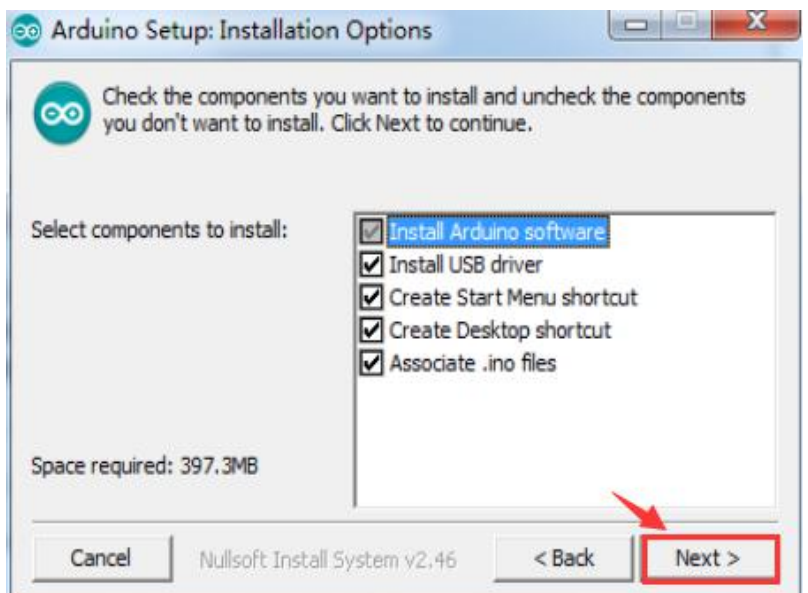
Consider supporting the Arduino Software by contributing to its development. (US tax payers, please note this contribution is not tax deductible). [Learn more on how your contribution will be used.](#)



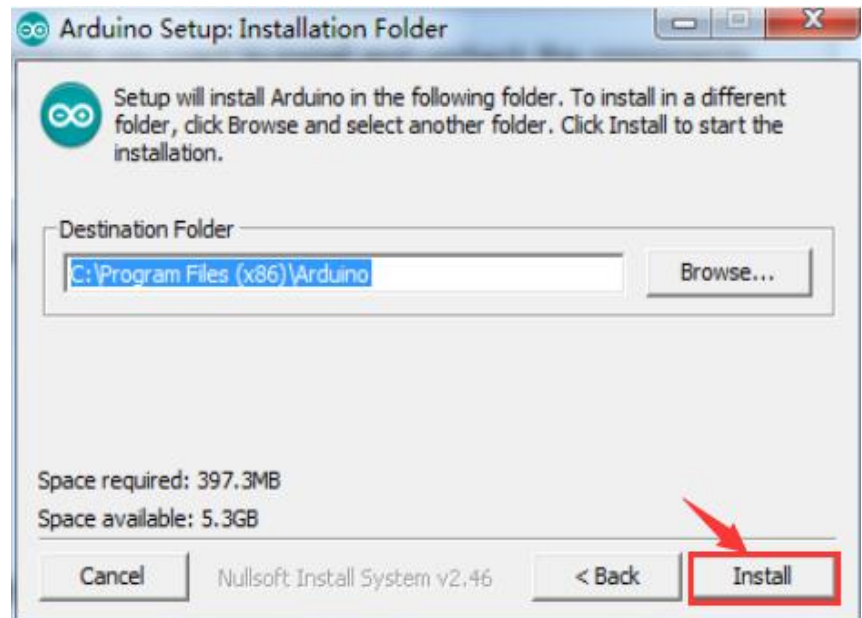
STEP4:

These are available in the materials we provide, and the versions of our materials are the latest versions when this course was made.

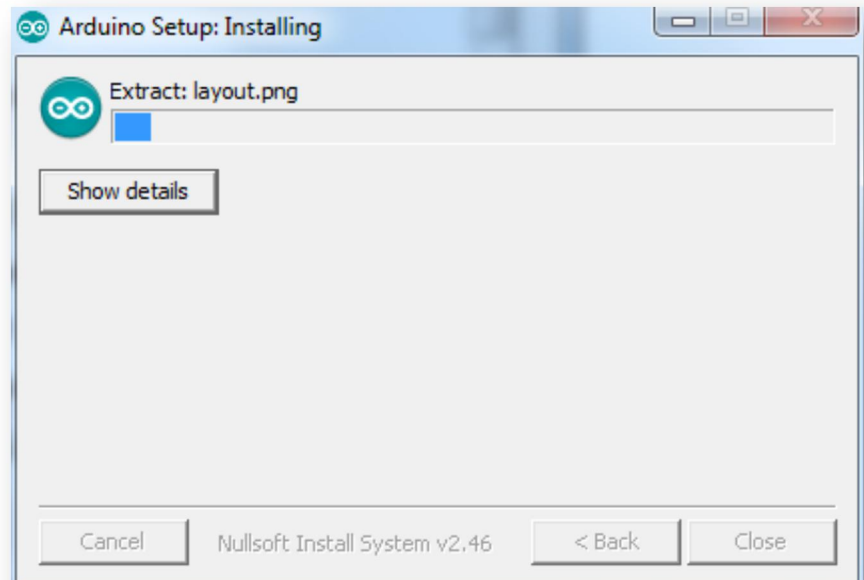
Choose **"I Agree"** to see the following interface.



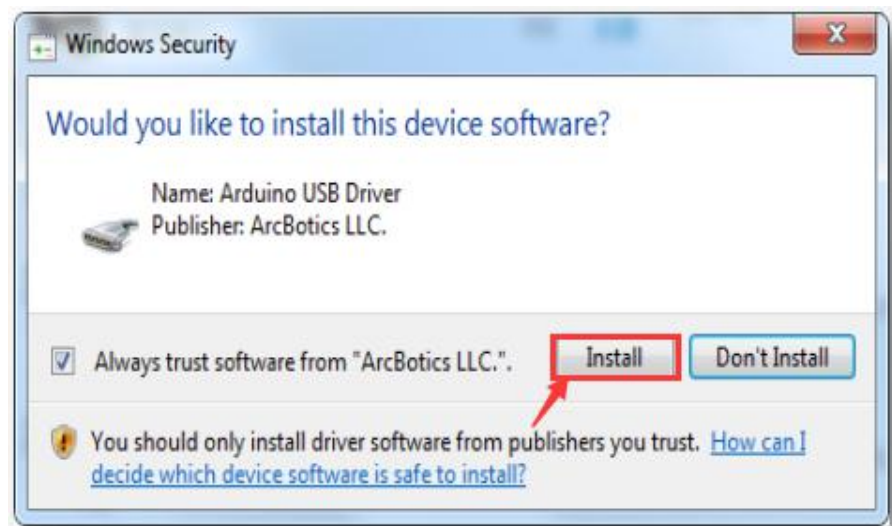
Choose **"Next"** to see the following interface.



Press **"Install"** to initiate installation.



Finally, the following interface appears, you should choose Install to ensure correctness of development.

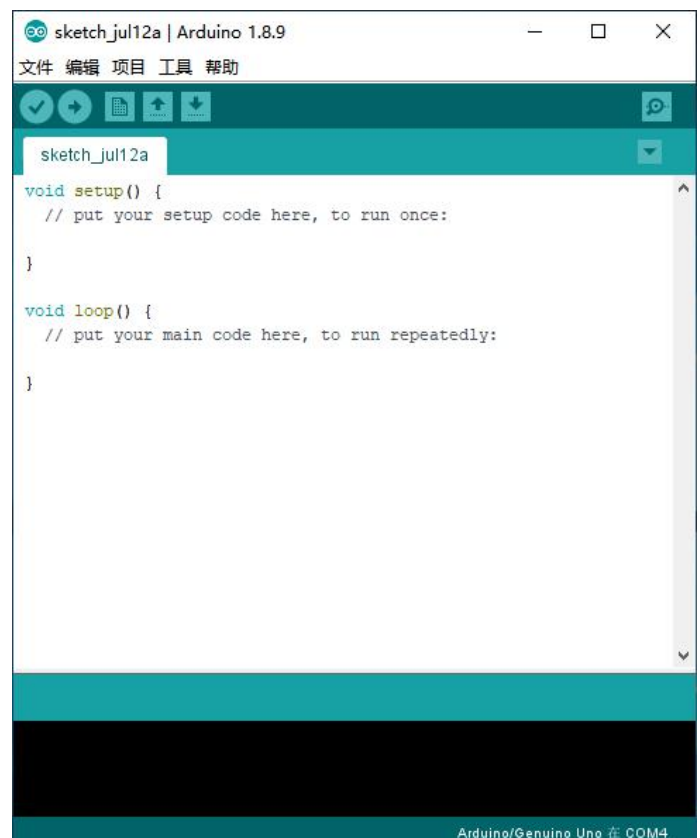


STEP5:

Next, the following icon appears on the desktop.

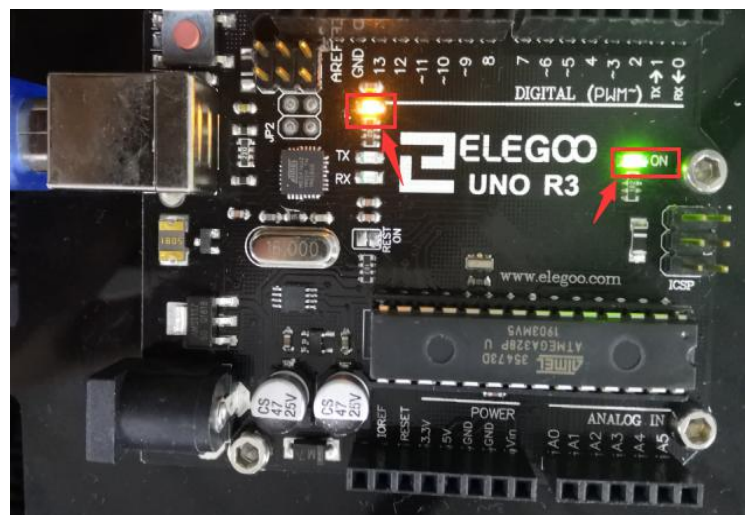


Double-click to enter the desired development environment.



STEP6:

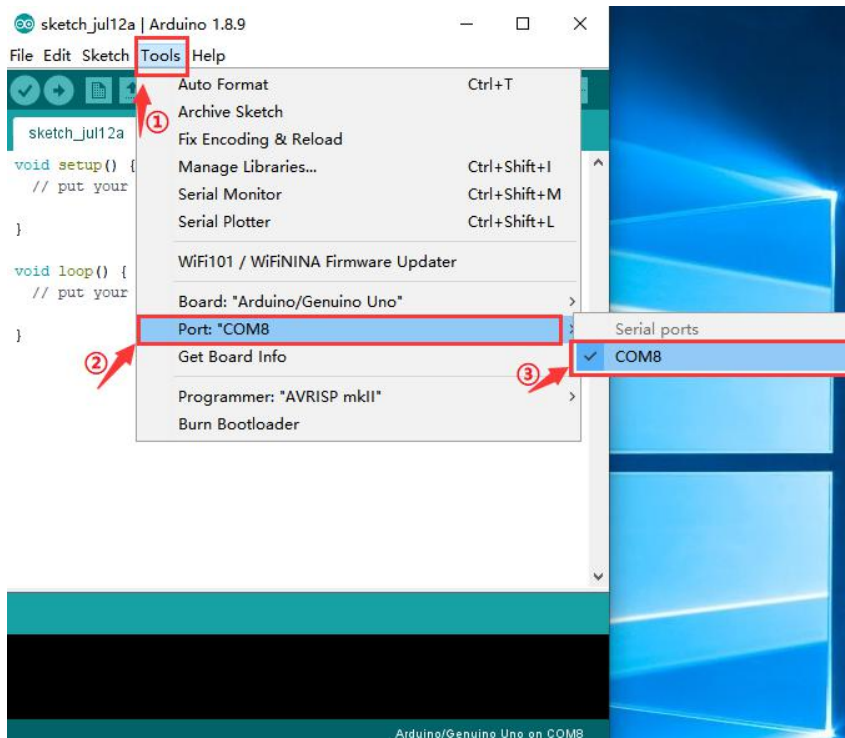
Connect development board of the car to the computer.



STEP7:

Open the Arduino IDE. Select "Tool"
→ "Port:" → "COM8".

Each Arduino Uno board has a different COM number on the same computer in Arduino 1.8.9. You should choose the COM number of the actual display.



The controller board on the robot car does not need to install the driver software on Windows 10, Linux, and macOS operating systems. If you can not find the robot car device on the device manager, please use another USB cable and connect the robot car to another USB port.

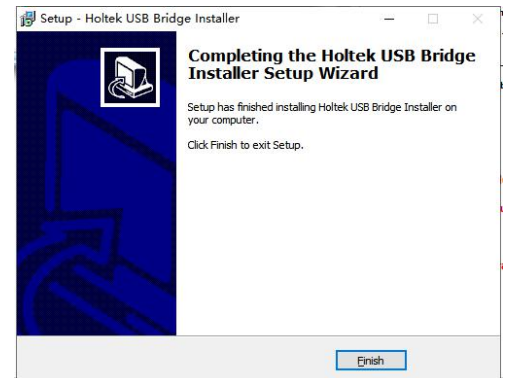
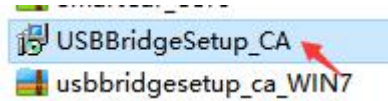
Please connect the robot car to other computers to make sure this is not a computer issue.

if your computer's OS is win7, you should download the usbbridgesetup_ca_WIN7 on our website:

<http://www.elegoo.com/download/>

unzip the zip file,running the installer

"USBBridgeSetup_CA"

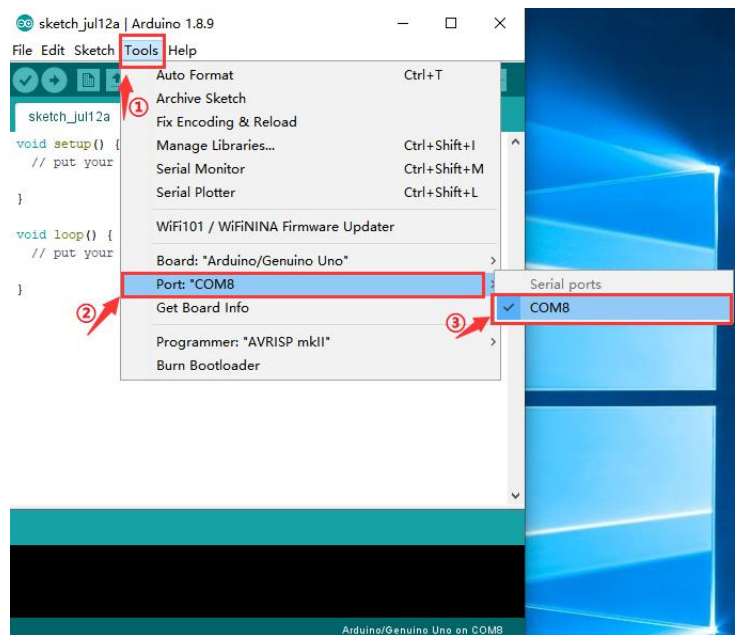


STEP8:

After the driver is installed, please

open the IDE and then click

"Tools" → "Board" → "Arduino/Genuino Uno".



STEP9:

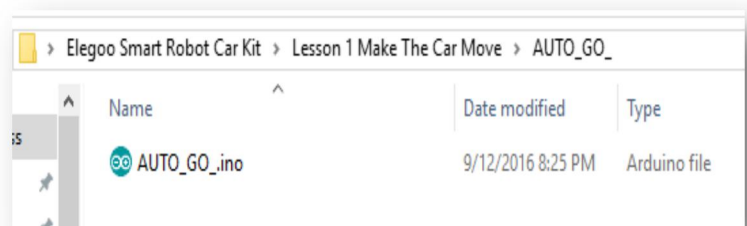
Click "Tools" → "Port" → "COM" .

STEP10:

Open the code file in the directory

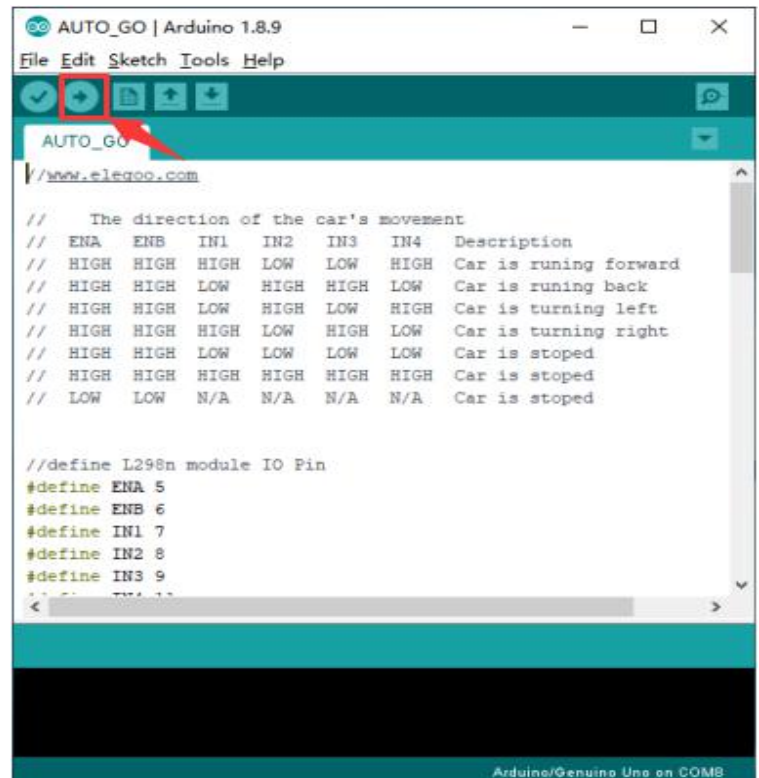
"\Lesson 1 Make The Car Move \AUTO_GO_\AUTO_GO_.ino"

upload to the UNO controller board.

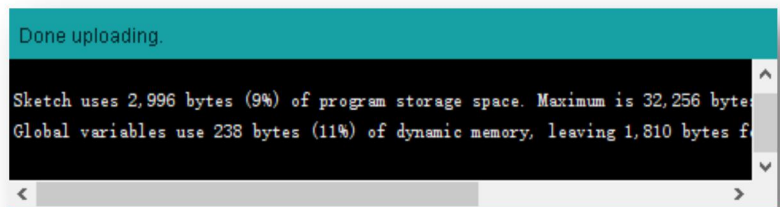


TIPS:

When uploading codes, please remove the Bluetooth module from the IO expansion board (because the serial port for uploading codes and Bluetooth communication is the same one and there will be conflicts). You can mount the Bluetooth module after the upload.



The picture above shows that it is uploaded successfully.



At this time, the Arduino development environment has been successfully built.



<http://www.elegoo.com>

2020.10.26
